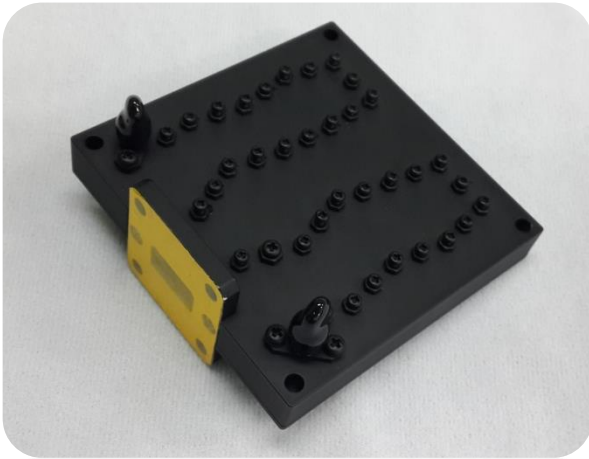


# Diplexers – High Isolation



## Applications

- Military/Airborne Applications
- UAV Datalink
- SatCom/Terrestrial High Data Transmission

## Features

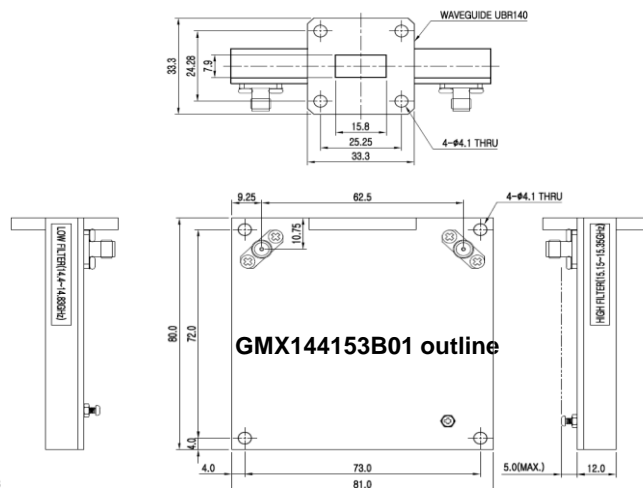
- Robust Design
- Excellent Insertion Loss, Rejection, and Isolation
- High Power Handling

## Specification

Parameter	GMX144153B01	
Pass Band	LB 14.4 – 14.83GHz	/ HB 15.15 – 15.35GHz
Insertion Loss	1.2dB max.	/ 1.4dB max.
VSWR	18dB min.	
Rejection	60dB min @ DC to 14.15GHz / 60dB min @ DC to 14.15GHz 100dB min @ 15.15 to 15.35GHz / 130dB min @ 14.4 to 14.83GHz 60dB min @ 15.35 to 18GHz / 60dB min @ 15.65 to 18GHz	
Operating Temperature	-35 to +85 degC	
Interfaces	2 SMA (f) / Waveguide UBR140	
Power Handling	200W	
Dimension	See below outline	

ITAR Free / RoHS Compliant

The specification subject to change without notice.



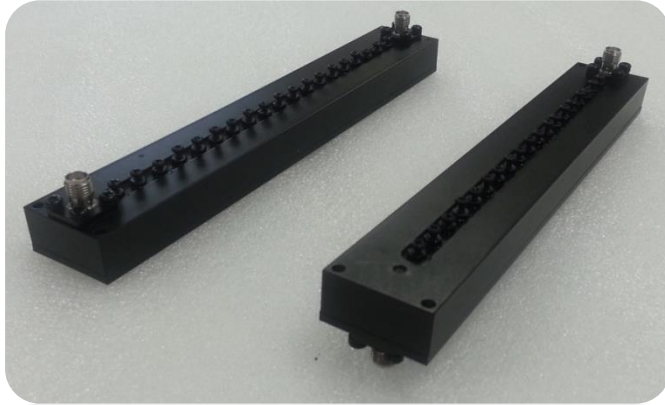
NOTES

1. 외관에 이물질이나 Burr, 칩핑 등 사용상 유해한 요소가 없어야 함.

For the customized specification, price, and delivery ; Contact us

#1005, Woolim Lions Valley 3<sup>rd</sup>, 5445 Sangdaewon-dong, Jungwon-gu, Seoungnam-si, Gyeonggi-do 462-819, Korea  
TEL : +82-31-713-6105 FAX : +82-31-720-5011 [Http://www.genmixtech.com](http://www.genmixtech.com)

# Band Pass Filter for High Rejection



## Applications

- Military/Airborne Applications
- UAV Datalink
- SatCom/Terrestrial High Data Transmission

## Features

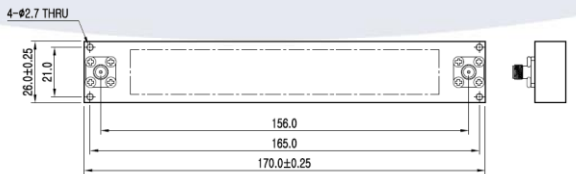
- Robust Design
- Excellent Insertion Loss and Rejection
- High Power Handling

## Specification

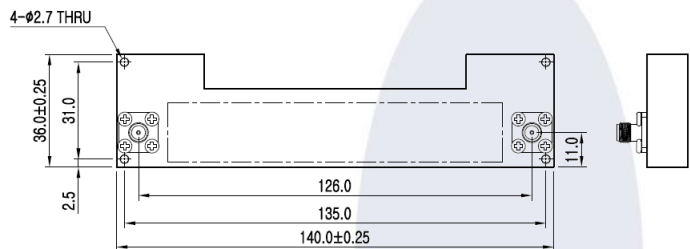
Parameter	GMF144148B01 & 02 / GMF151153B01	
Pass Band	14.4 – 14.83GHz	/ 15.15 – 15.35GHz
Insertion Loss	1.0dB max.	/ 1.2dB max.
VSWR	18dB min.	
Rejection	60dB min @ DC to 14.15GHz / 105dB min @ DC to 14.83GHz 80dB min @ 15.15 to 18GHz / 60dB min @ 15.65 to 18GHz	
Operating Temperature	-40 to +85 degC	
Dimension	GMF144148B01 & 02 : 170.0 x 26.0 x 13.0mm GMF151153B01 : 140.0 x 36.0 x 12.0mm	

ITAR Free / RoHS Compliant

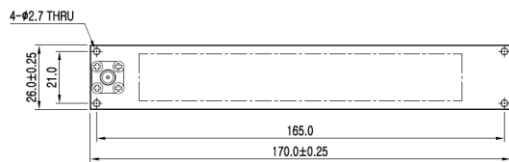
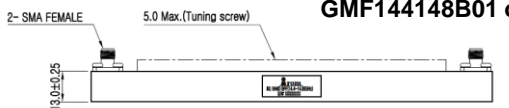
The specification subject to change without notice.



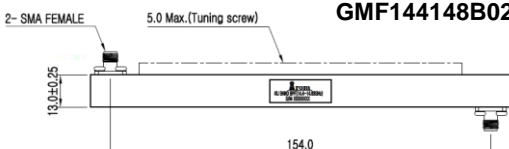
**GMF144148B01 outline**



**GMF151153B01 outline**



**GMF144148B02 outline**



For the customized specification, price, and delivery ; Contact us

#1005, Woolim Lions Valley 3<sup>rd</sup>, 5445 Sangdaewon-dong, Jungwon-gu, Seoungnam-si, Gyeonggi-do 462-819, Korea  
TEL : +82-31-713-6105 FAX : +82-31-720-5011 [Http://www.genmixtech.com](http://www.genmixtech.com)