

# 2 Way Power Splitter



## Applications

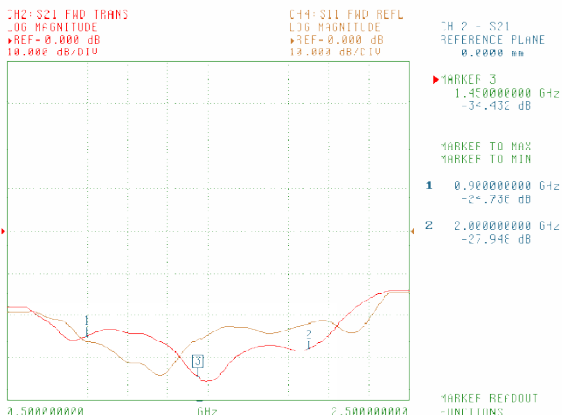
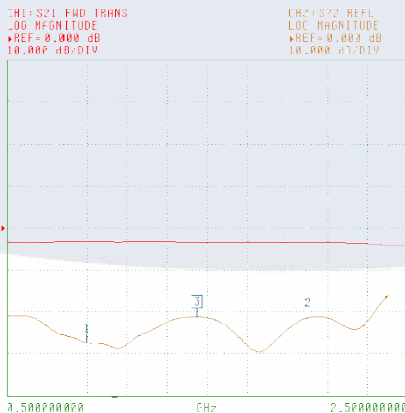
- VSAT / SatCom Applications
- Cellular / PCS Applications
- Test and Measurement

## Features

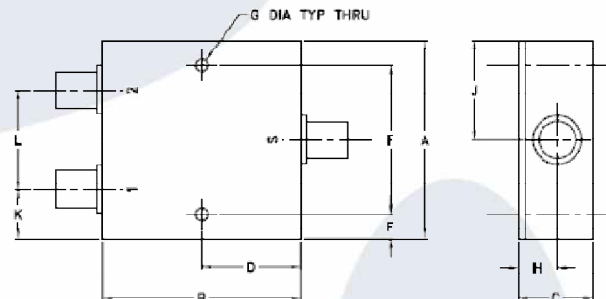
- 2 Way High Power Splitter
- Wideband, 700 to 2100MHz
- Low Insertion Loss, 0.4dB typ.
- Good Isolation, 25dB typ.
- DC Blocking (all ports)

## Electrical Specifications

FREQ. RANGE (MHz)	ISOLATION (dB)		INSERTION LOSS (dB) ABOVE 3.0 dB		PHASE UNBALANCE (Degrees)		AMPLITUDE UNBALANCE (dB)		POWER INPUT <sup>1</sup> (W)	
	Typ.	Min.	Typ.	Max.	Typ.	Max.	Typ.	Max.	as combiner <sup>2</sup> Max.	as splitter Max.
$f_L - f_U$										
700-2100	25	20	0.4	1.2	0.7	3.0	0.05	0.3	2.5	10



## Outline Drawing



## Outline Dimensions (inch/mm)

A	B	C	D	E	F	G
2.00	2.00	.75	1.00	.13	1.750	.125
50.80	50.80	19.05	25.40	3.30	44.45	3.18
H	J	K	I	wt		
.39	1.00	.50	1.00	grams		
9.91	25.40	12.70	25.40	170.0		

The specification subject to change without notice.

For the customized specification, price, and delivery ; Contact us



#1005, Woolim Lions Valley 3<sup>rd</sup>, 5445 Sangdaewon-dong, Jungwon-gu, Seoungnam-si, Gyeonggi-do 462-819, Korea  
TEL : +82-31-713-6105 FAX : +82-31-720-5011 [Http://www.genmixtech.com](http://www.genmixtech.com)