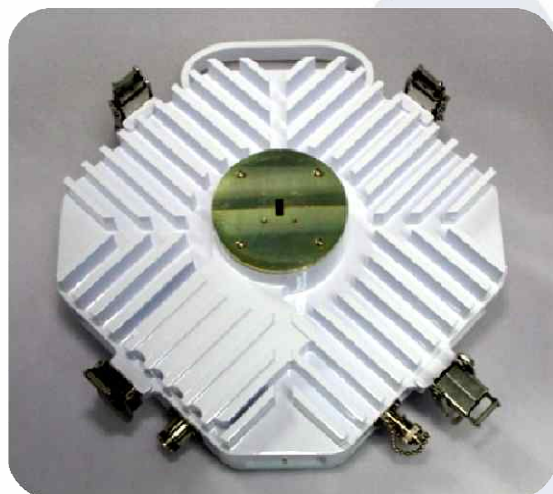


# IP Digital Microwave Radio – GMHC 620E



## Product Overview

IP Digital Microwave Radio is a high capacity wireless Ethernet backhaul product family covering 7 to 23GHz licensed microwave radio frequency bands. TDM networking functionality is easily combined to it up to maximum 16E1 with the external optional module, so customers can have flexible and cost effective solution for both TDM and IP Ethernet network.

IP Digital Microwave Radio supports various configuration or installation scenario such as aggregation(2+0), hot-standby or diversity (1+1). The maximum capacity is 310Mbps and (620Mbps aggregate).

IP Digital Microwave provides the Ethernet baseband interfaces such as VLAN, layer 2 switch and Sync E, and allows a secure and standard network management access via HTTP, HTTPS, SNMP.

## Applications

### ▪ Mobile backhaul

Operators are able to manage the entire lifecycle of the network's migration to 4G, while keeping revenue generating 2G and 3G profitable throughout the process.

### ▪ Private Networks

IP Digital Microwave Radio enables government agencies, enterprises and utilities of all kinds to rapidly deploy a cost effective, self owned private network.

### ▪ Fixed Network

IP Digital Microwave Radio delivers integrated high speed data, video and voice traffic in the most optimum and cost-effective manner.

## Features

- Available in the 7 / 8 / 13 / 15 / 18 / 23GHz (11 / 26 / 28 / 32 / 38GHz coming soon)
- Automatic Transmit Power Control (ATPC)
- ETSI and ANSI channel plans
- High System Gain
- Hitless Adaptive Modulation (ACM)
- Low Density Parity Check (LDPC)
- Data Traffic 310Mbps (620 aggregate)
- Standard and secured Management access
- Support various configuration 2+0, 1+1
- Upto 3 independent Eth channels
- Enhanced VLAN support and QoS support
- SyncEthernet and IEEE1588 support
- TDM with external option up to 16E1

The specification subject to change without notice.



For the customized specification, price, and delivery ; Contact us

#1005, Woolim Lions Valley 3<sup>rd</sup>, 5445 Sangdaewon-dong, Jungwon-gu, Seoungnam-si, Gyeonggi-do 462-819, Korea  
TEL : +82-31-713-6105 FAX : +82-31-720-5011 [Http://www.genmixtech.com](http://www.genmixtech.com)

# IP Digital Microwave Radio – GMHC 620E

## Performance

Frequency Range		7GHz	8GHz	13GHz	15GHz	18GHz	23GHz
Bandwidth (MHz)		7/14/28/56					
Capacity (Aggregate)		310 Mbps (620 Mbps)					
Freq. Accuracy (ppm)		±7					
Modulation		QPSK/ 16QAM/ 32QAM/ 64QAM/ 128QAM/ 256QAM					
RF interface		1.025" dia	1.025" dia	WR75	WR62	WR42	WR42
Tx Power Max (dBm)	QPSK	27	27	26	26	25	25
	16QAM	22	22	23	23	22	22
	32QAM	22	22	23	23	22	22
	64QAM	18	18	18	18	17	17
	128QAM	18	18	18	18	17	17
ATPC Range (dBm)		0~Max Power					
Threshold (dBm), QPSK	7MHz	-88	-88	-87	-87	-87	-87
	14MHz	-85	-85	-84	-84	-84	-84
	28MHz	-82	-82	-81	-81	-81	-81
	56MHz	-80	-80	-79	-79	-79	-79
Threshold (dBm), 16QAM	7MHz	-82	-82	-81	-81	-81	-81
	14MHz	-79	-79	-78	-78	-78	-78
	28MHz	-76	-76	-75	-75	-75	-75
	56MHz	-74	-74	-73	-73	-73	-73
Threshold (dBm), 32QAM	7MHz	-80	-80	-79	-79	-79	-79
	14MHz	-76	-76	-75	-75	-75	-75
	28MHz	-73	-73	-72	-72	-72	-72
	56MHz	-71	-71	-70	-70	-70	-70
Threshold (dBm), 64QAM	7MHz	-77	-77	-76	-76	-76	-76
	14MHz	-73	-73	-72	-72	-72	-72
	28MHz	-70	-70	-69	-69	-69	-69
	56MHz	-68	-68	-67	-67	-67	-67
Threshold (dBm), 128QAM	7MHz	-74	-74	-73	-73	-73	-73
	14MHz	-70	-70	-69	-69	-69	-69
	28MHz	-67	-67	-66	-66	-66	-66
	56MHz	-65	-65	-64	-64	-64	-64
Threshold (dBm), 256QAM	7MHz	-71	-71	-70	-70	-70	-70
	14MHz	-67	-67	-66	-66	-66	-66
	28MHz	-64	-64	-63	-63	-63	-63
	56MHz	-62	-62	-61	-61	-61	-61

## Power & Mechanic

Power Supply (V)	-40~-58
Power consumption (W)	35W (ODU), 22W (IDU)
Size (mm)	254 x 268 x 86 (ODU),
ODU weight (Kg)	4

## Management

TCP/IP	WEB, SNMP, Telnet
Monitoring	Via Telnet, WEB GUI, SNMP

## Ethernet & TDM

Interface	3 x 10/100/1000Base-T (RJ45), 1 x SFP (1000Base-SX/LX)
Number of independent Ethernet channels	up to 3
VLAN / QoS Support	IEEE802.1Q / 802.1p QoS
Maximum packet length	10KBytes (Jumbo Packets)
TDM	16E1 max with external module, (optional)

## Environmental

Temperature	-33°C~+55°C (ODU), -5°C~+55°C (IDU)
Storage / Transport	ETS 300-019-2-1

The specification subject to change without notice.

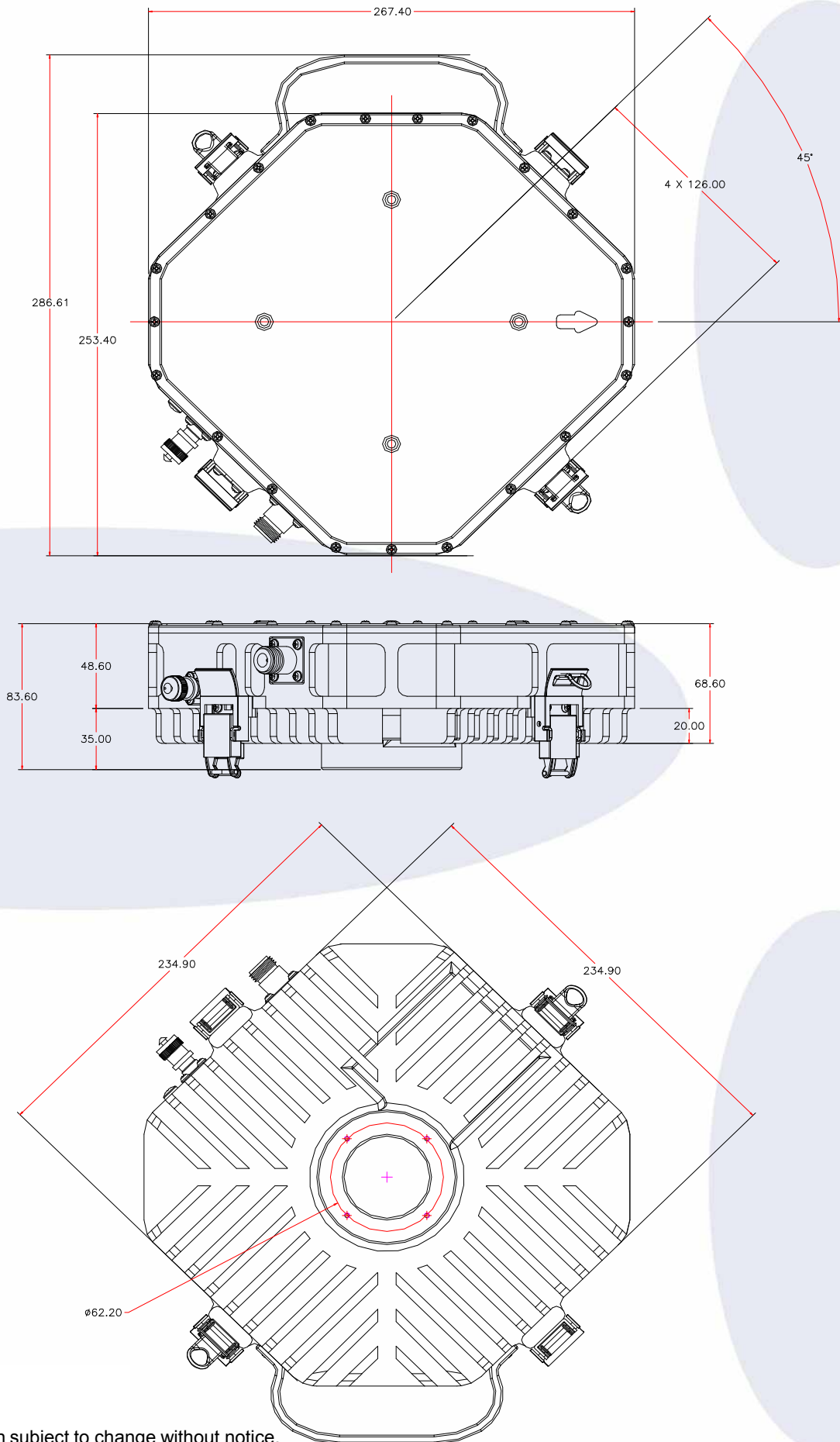


For the customized specification, price, and delivery ; Contact us

#1005, Woolim Lions Valley 3<sup>rd</sup>, 5445 Sangdaewon-dong, Jungwon-gu, Seoungnam-si, Gyeonggi-do 462-819, Korea  
TEL : +82-31-713-6105 FAX : +82-31-720-5011 [Http://www.genmixtech.com](http://www.genmixtech.com)

# IP Digital Microwave Radio – GMHC 620E

ODU Out Line



The specification subject to change without notice.



For the customized specification, price, and delivery ; Contact us

#1005, Woolim Lions Valley 3<sup>rd</sup>, 5445 Sangdaewon-dong, Jungwon-gu, Seoungnam-si, Gyeonggi-do 462-819, Korea  
TEL : +82-31-713-6105 FAX : +82-31-720-5011 [Http://www.genmixtech.com](http://www.genmixtech.com)