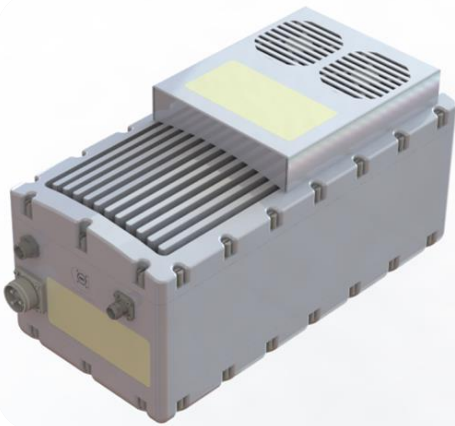


Ka-Band 60W/100W SSPA with BUC option



Applications

- Satcom on the Move, Micro Flyaway Systems, VSATs, SNG and antenna-mount applications

Features

- 60/100W min. Output Power
- 3.5GHz bandwidth to support full Ka-band applications
- Based on GaN Technology for Small Size & Light Weight

Options

- L-band to Ka-band BUC
- 1:1 redundant switching

Parameter	Model GMA275310B01 SSPA	Model GMA275310B02 SSPA
Output Frequency	27.5 to 31.0 GHz	
Output Power (min.) (P _{SAT} , CW) (P _{Iin} , CW)	100 watts (50.0 dBm) typical 50 watts (47.0 dBm) min.	60 watts (48.0 dBm) typical 30 watts (45.0 dBm) min.
L-Band Input (BUC option only)	L-band to Ka-band block upconverter, with multiplexed 10 MHz reference Multi-band BUC: 500MHz or 1GHz within Ka-band	
Gain	60 dB min. at small signal	
Gain Stability Over temp, constant drive Over 24 hours, fixed temp. Over 40 MHz Over 500 MHz	±1.5 dB max. ±0.25 dB max. ±0.5 dB max. ±2.0 dB max.	
Small Signal Gain Slope	±0.04 dB/MHz max.	
Gain Adjustment Range	20 dB min. (1 dB steps)	
Input VSWR	1.5:1 max.	
Output VSWR	1.5:1 max.	
AM/PM Conversion	< 2.0°/dB max. @ 3dB Back-off at rated Psat power	
Harmonic	-60 dBc max. @ rated power	
Spurious	-60 dBc max. @ rated power	
Noise Power Density	<-70 dBW/4 kHz @ TX Band	
AC Input Voltage	100-264 VAC (47-63 Hz)	
Power Consumption	2000 W max. @ Psat	1400 W max. @ Psat
Ambient Temperature	-40°C to +55°C @ operating	
Relative Humidity	100% condensing	
Altitude	10,000 ft with standard adiabatic derating of 2°C/1000 ft	
Cooling	forced air	
Shock	20 g p-p, 11 msec pulses	
Vibration	3 g rms 30 min, 5-500 Hz	
RF Output Connector	WR28 Waveguide, grooved flange	
Input Connector	2.9 mm female	
M&C Interface	32 pin MS-type (optional Ethernet interface)	
Dimensions, L x W x H	19.7" x 10.0" x 9.0" (500x254x230mm)	17.7" x 8.7" x 9.0" (450x220x230mm)
Weight	50.8 lbs (23 kg) typ.	44 lbs (20 kg) typ.

The specification subject to change without notice.



For the customized specification, price, and delivery ; Contact us
 #1005, Woolim Lions Valley 3rd, 5445 Sangdaewon-dong, Jungwon-gu, Seoungnam-si, Gyeonggi-do 13403, Korea
 TEL : +82-31-713-6105 FAX : +82-31-720-5011 [Http://www.genmixtech.com](http://www.genmixtech.com)