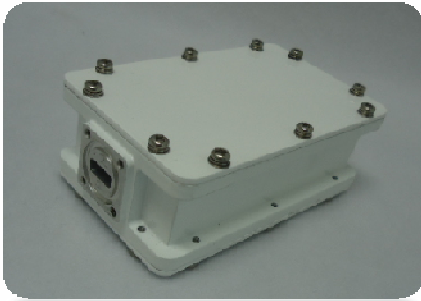


Ka-Band LNBS (Low Noise Blockconverters)



Applications

- LNBS for Ka-band VSAT
- SatCom Applications
- Digital Satellite Broadcasting

Features

- External PLDRO LNB (Option : Internal Reference)
- Compact Size and Light Weight
- Various Options for Interface

Specification

Model No	GMD182188A01	GMD192198A01	GMD198202A01	GMD202212A01	GMD214216A01
Input Frequency	18.2 – 18.85 GHz	19.2 – 19.85 GHz	19.8 – 20.2 GHz	20.2 – 21.2 GHz	21.4 – 21.621 GHz
Output Frequency	950 – 1600 MHz	950 – 1600 MHz	950 – 1350 MHz	950 – 1950 MHz	1150 – 1371 MHz
L.O Frequency	17.25 GHz	18.25 GHz	18.85 GHz	19.25 GHz	20.25 GHz
Output P1dB	+5dBm typ.				
Conversion Gain	58dB typ. / 55dB min. / 62dB max.				
Gain Flatness	4dB p-p max.				
Gain Ripple(40MHz)	+/- 0.75dB max.				
Image Rejection	40dBc min.				
Input VSWR	2.0 : 1 typ. / 2.2 : 1 max.				
Output VSWR	2.0 : 1 typ. / 2.2 : 1 max.				
Output Impedance	50 Ohm (N-type) or 75 Ohm (F-type)				
Noise Figure@+23°C	1.6dB max.				
Phase Noise	-70dBc/Hz @ 1kHz / -80dBc/Hz @ 10kHz / -100dBc/Hz @ 100kHz / -110dBc/Hz @ 1MHz				
L.O Leakage at Input Port	-50dBm max.				
L.O Stability (over temp.)	Same as Ext. Ref. (External Reference) Or +/-300kHz ~ +/-25kHz (Internal Reference : Option)				
Ext . Ref . Input	Through IF output connector				
Power Supply	+12 to +24V DC				
Required Current	300mA max.				
Operating Temp.	-30°C to +60°C				
Storage Temp.	-40°C to +80°C				
Relative Humidity	0% to 95% RH				
Input Interface	WR-42				
Output connector	N or F (Female)				
Weight	400g				

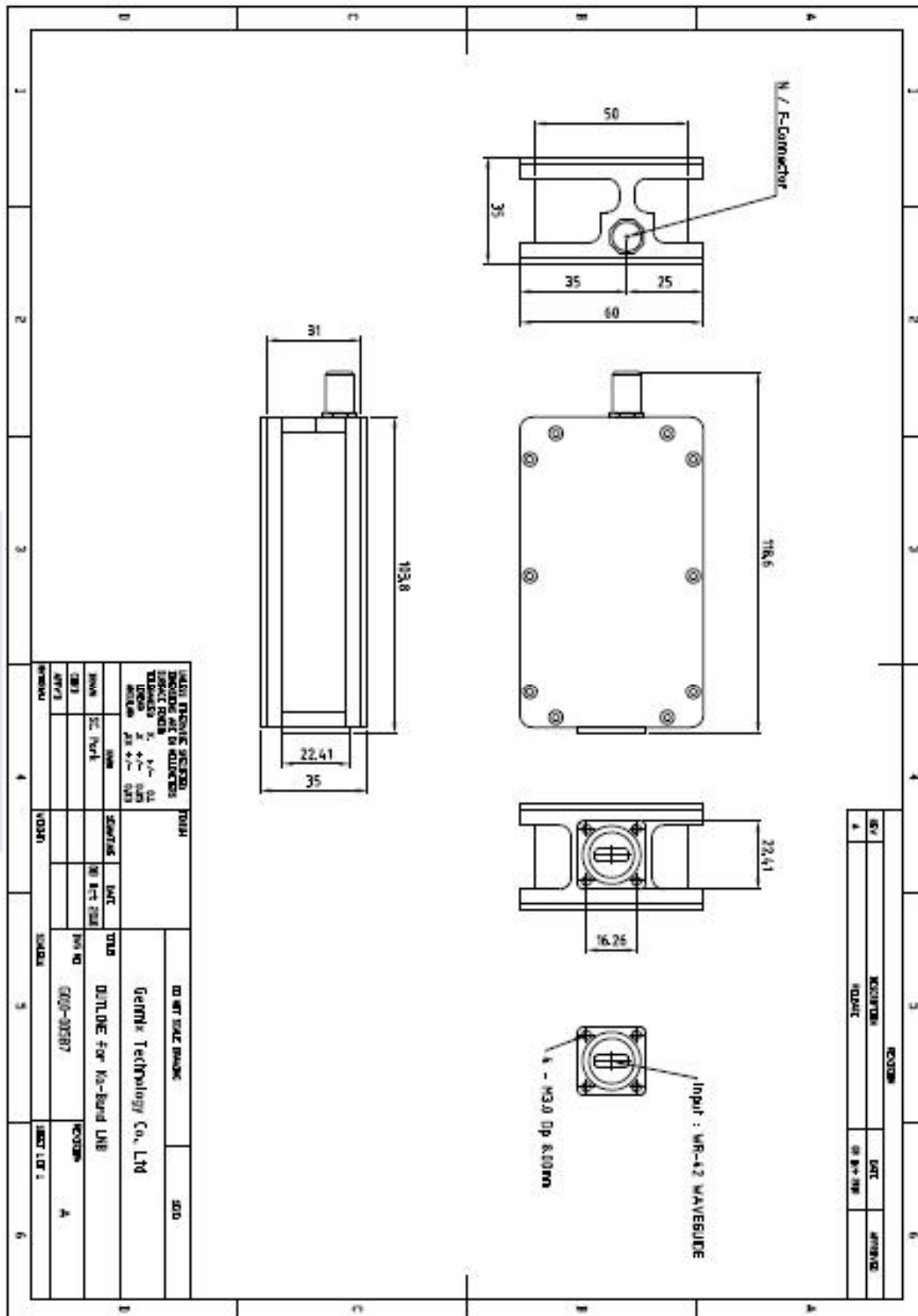
The specification subject to change without notice.

For the customized specification, price, and delivery ; Contact us



#1005, Woolim Lions Valley 3rd, 5445 Sangdaewon-dong, Jungwon-gu, Seoungnam-si, Gyeonggi-do 462-819, Korea
TEL : +82-31-713-6105 FAX : +82-31-720-5011 [Http://www.genmixtech.com](http://www.genmixtech.com)

Ka-Band LNBS (Low Noise Block converters)



The specification subject to change without notice.

For the customized specification, price, and delivery ; Contact us



#1005, Woolim Lions Valley 3rd, 5445 Sangdaewon-dong, Jungwon-gu, Seoungnam-si, Gyeonggi-do 462-819, Korea
 TEL : +82-31-713-6105 FAX : +82-31-720-5011 [Http://www.genmixtech.com](http://www.genmixtech.com)